

Steve Litwin Original Paintings

January through April, 2025

Exhibition Checklist

Each work of art is labeled either **Not For Sale (NFS)** or **Price Upon Request (PUR)**. All sale proceeds will benefit York Hospital's *Leading with Heart Cardiac Campaign*. If you are interested in purchasing a piece, would like to get in touch with the artist, or would like to learn about giving to York Hospital, please contact the York Hospital Philanthropy Office at 207-351-2385 or philanthropy@yorkhospital.com.

1. Retirement

Stroll, 12 x 16
(NFS)



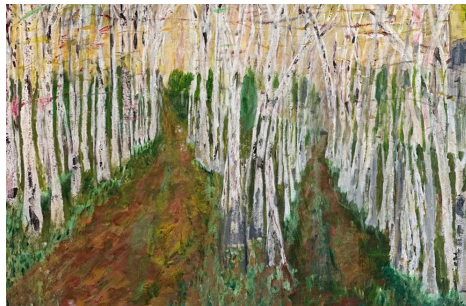
2. Take a Knee,

12 x 9 (NFS)



3. A Fork In Your Road,

24 x 36
(NFS)



4. Nubble Lighthouse in Sea Smoke,

16 x 20 (NFS)



5. Emergency Room Birch Tree,

24 x 36
(NFS)



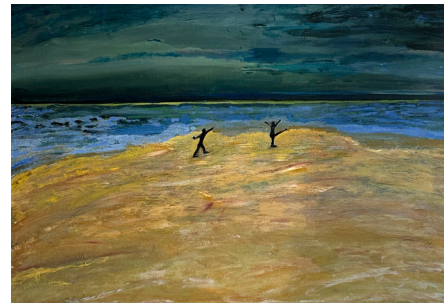
6. Nubble Up Close,

12 x 16
(NFS)



7. The York Harbor Dancers,

24 x 36
(PUR)



Steve Litwin Original Paintings

January through April, 2025

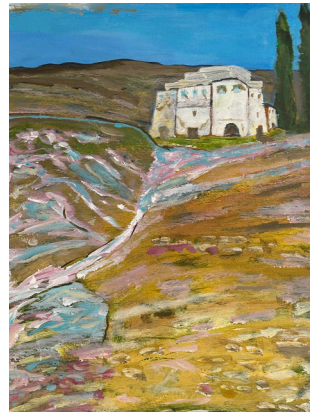
Exhibition Checklist

Each work of art is labeled either **Not For Sale (NFS)** or **Price Upon Request (PUR)**.

All sale proceeds will benefit York Hospital's *Leading with Heart Cardiac Campaign*.

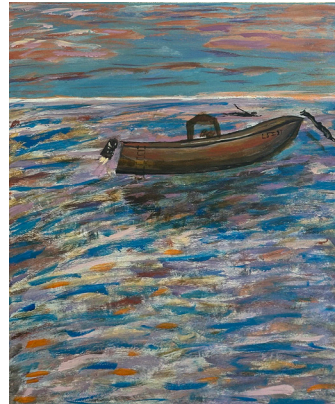
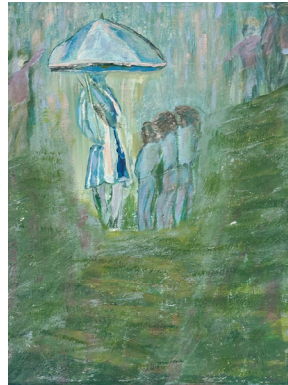
If you are interested in purchasing a piece, would like to get in touch with the artist, or would like to learn about giving to York Hospital, please contact the York Hospital Philanthropy Office at 207-351-2385 or philanthropy@yorkhospital.com.

8. Imaginary Ski Village,
32 x 38
(NFS)



11. Tuscan Villa,
16 x 24 (PUR)

9. Mother and Children . . .
Grandparents?,
12 x 16 (NFS)



12. Sunset Swim,
16 x 24 (PUR)

10. Whales Watching,
12 x 16
(PUR)



13. Suburban Angst,
16 x 20,
(NFS)

Steve Litwin Original Paintings

January through April, 2025

Exhibition Checklist

Each work of art is labeled either **Not For Sale (NFS)** or **Price Upon Request (PUR)**.

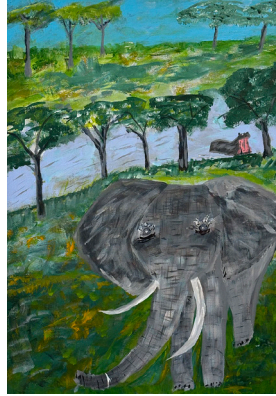
All sale proceeds will benefit York Hospital's *Leading with Heart Cardiac Campaign*.

If you are interested in purchasing a piece, would like to get in touch with the artist, or would like to learn about giving to York Hospital, please contact the York Hospital Philanthropy Office at 207-351-2385 or philanthropy@yorkhospital.com.

- 14. Killington
Ski House,
30 x 30
(NFS)**



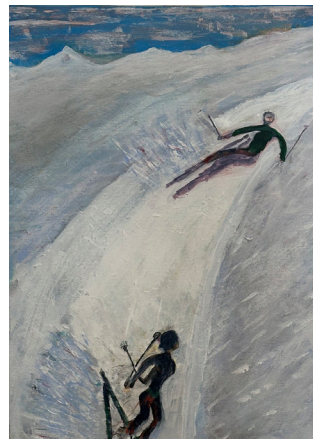
- 17. African
Playdate,
18 x 24, (PUR)**



- 15. Lady Winter
Dippers,
20 x 24 (NFS)**



- 18. Catch Me
If You Can,
12 x 16, (PUR)**



- 16. The Lobstah
Artiste,
16 x 20, (PUR)**



- 19. Last Run,
12 x 16,
(PUR)**



Steve Litwin Original Paintings

January through April, 2025

Exhibition Checklist

Each work of art is labeled either **Not For Sale (NFS)** or **Price Upon Request (PUR)**.

All sale proceeds will benefit York Hospital's *Leading with Heart Cardiac Campaign*.

If you are interested in purchasing a piece, would like to get in touch with the artist, or would like to learn about giving to York Hospital, please contact the York Hospital Philanthropy Office at 207-351-2385 or philanthropy@yorkhospital.com.

20. First Run,
12 x 16, (PUR)



23. York Harbor in Sea Smoke,
16 x 20,
(PUR)



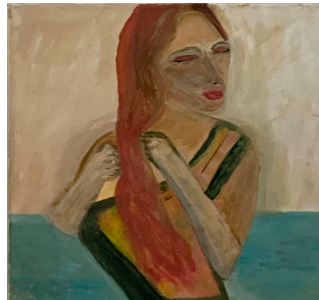
21. Lonely lighthouse,
12 x 16,
(PUR)



24. Santa Claus and Dog,
16 x 20,
(PUR)



22. The Governess,
12 x 16, (PUR)



25. The Nowhere Pier,
24 x 24,
(PUR)

